

**TA35 SLRA**

**ELEVATIONS AND OVERALL DEPTHS**

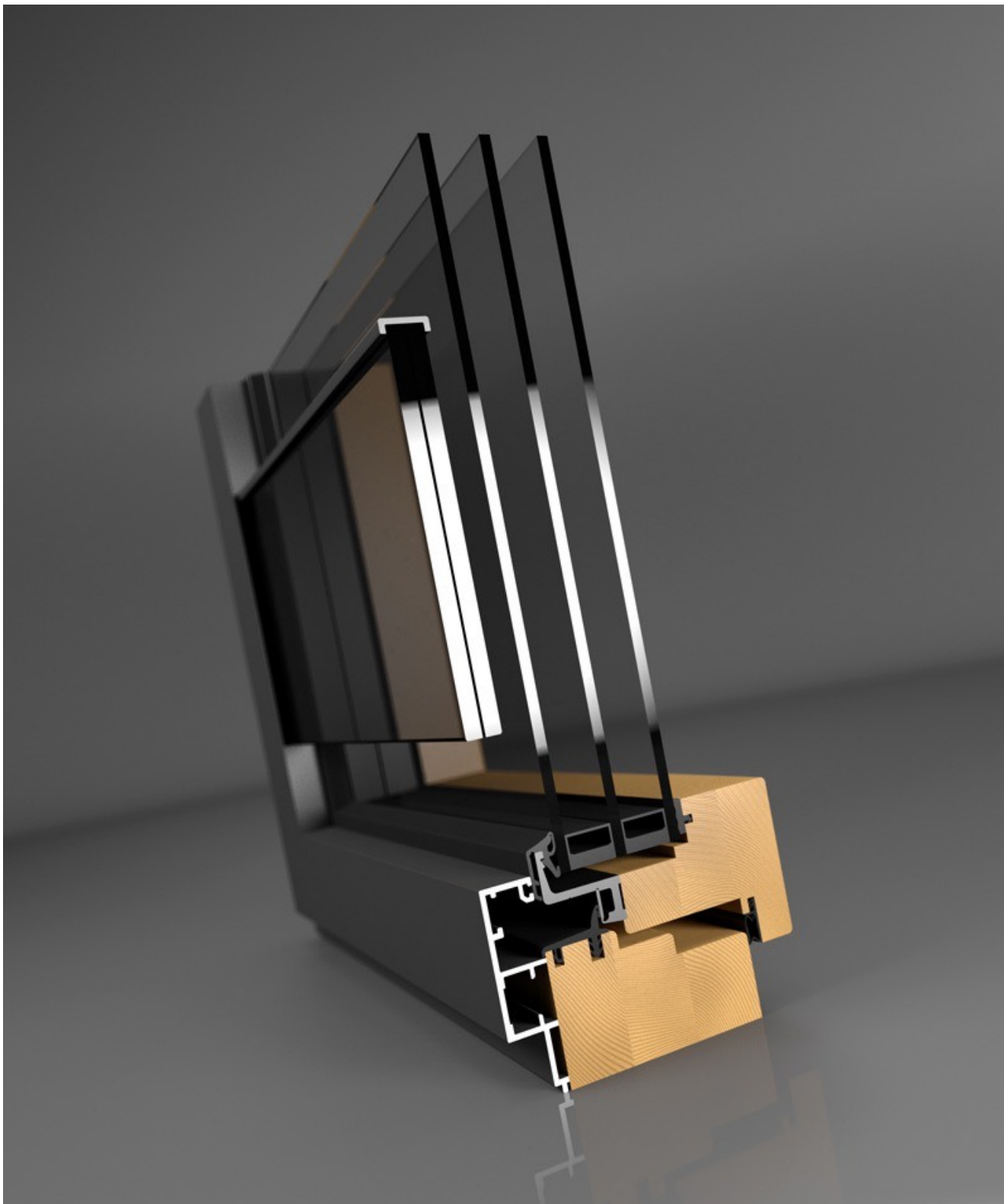
Elevations Standard Sash	11 mm
Elevations Standard Frame	50 mm
	72 mm
Elevations Standard Curtain Wall	80 mm
	120 mm
	150 mm
Depths Standard Wood Profile	68 mm
	78 mm
	88 mm

**MAXIMUM SASH SIZES**

Width Sash Max	1.600 mm
Height Sash Max	3.000 mm
Weight Sash Tilt/Turn	200 kg
Weight Sash Side Hung	300 kg

**FINISH + CORNER JOINT ALUMINIUM**

RAL, NCS, DB	welded
RAL, NCS, DB	mechanical
Anodised	mechanical



**NORMS + VALUES: CE: EN 14351-1**

DIN EN 12207 Air Impermeability Class 4
DIN EN 12208 Driving Rain Resistance Class E1200
DIN EN 12210 Wind Load Resistance Class C4
DIN EN ISO 10077-2 $U_w \geq 0,69 \text{ W/(m}^2\text{K)}$
DIN EN ISO 717-1 Noise Control: $R_w \text{ (C; Ctr) = 48 (-2; -6) dB}$
DIN EN 1627 Burglary Resistance: RC1N, RC2N, RC2
DIN 18008-4 TRAV Anti Drop Device: Category A, B, C

**WOOD TYPES**

Spruce
Fir
Larch
Pine
Douglas Fir
Hemlock
Oak

